

Optimal Cancer Care Pathways

By Leah Savage,
GRICS Cancer Service Improvement Coordinator



Optimal Cancer Care Pathways (OCCPs)

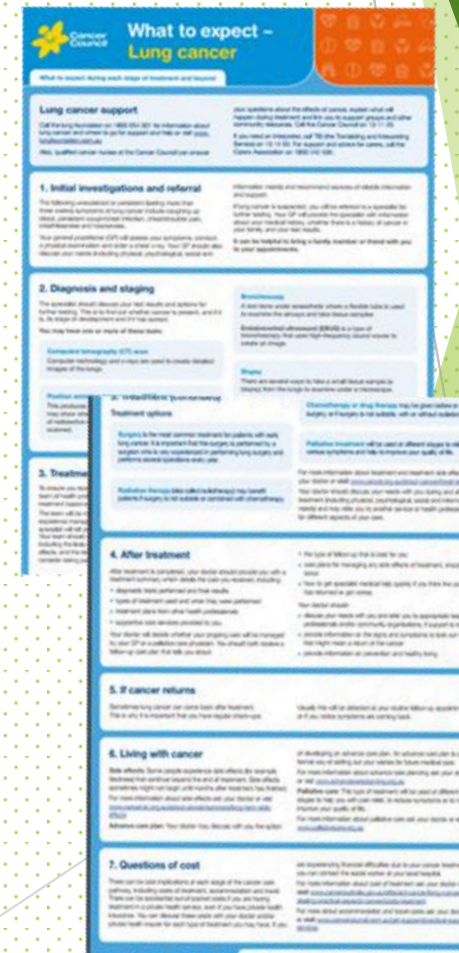


What are OCCP's ...

- ▶ Are recommended National guides to promote best practice cancer care for specific cancer types. They describe key phases in a patients experience and expected standards of care at each step.
- ▶ OCCP's are a detailed and concise information pack of detailed steps, mapping a patients cancer journey.
- ▶ Intention is to guide and deliver consistent, best care, safe, high-quality, and evidence based care
- ▶ They also aim to foster and guide a patients experience and promote quality cancer care
- ▶ Program undertaken by Victoria as a National work plan aimed at improving cancer care. Nationally endorsed by the National Cancer Expert Reference Group, Australian Health Ministers Advisory Council, Cancer Australia and Cancer Council Australia.
- ▶ 15 OCCPs have been released for Health Professionals and 19 for Consumers

What they look like...

3 versions-Detailed, Quick reference and patient 'what to expect'



The steps ...

Step 1 - Prevention and early detection- e.g. Lung Cancer - QUIT

Step 2- Signs and symptoms, Presentation, Initial investigations and referral.

Step 3 - Diagnosis, staging and treatment planning.

Step 4 - Treatment- such as Surgery/ Chemotherapy/ Radiotherapy

Step 5- Care after Initial treatment and recovery.

Step 6- Managing recurrent, residual and metastatic disease

Step 7- End of life care

Optimal Time frames

Step in pathway	Care point	Timeframe
Presentation, Initial Investigations and Referral	2.2 Initial investigations by GP	Tests results should be provided to the patient within one week. Prior discussion of test results with a specialist is not critical.
	2.3 Specialist appointment	The specialist appointment should take place within 2 weeks of initial GP referral.
Diagnosis, Staging and Treatment Planning	3.3 Treatment planning	Ideally, all newly diagnosed patients should be discussed in a multidisciplinary team meeting before beginning treatment.
Treatment	4.2 Treatment	The time from initial referral to initial treatment should be no more than 6 weeks.

Intentions of the Optimal Cancer Pathways

- ▶ Patient centered Care-
- ▶ Safe and Quality Care-
- ▶ Multidisciplinary Care-
- ▶ Supportive Care-
- ▶ Care coordination-
- ▶ Communication
- ▶ Research and clinical trials-

Our Focus

So with all that information-

GRICS current focus is on Lung and Colorectal Cancer with the release of Optimal Cancer Care Pathways

State wide Ovarian Optimal Cancer Care Pathway is underway and the next to be released are Oesophagogastric and Prostate Cancer pathways.

Resources -

- OCPs for Health Professionals:
www.cancer.org.au/OCP
- OCPs for consumers:
www.cancerpathways.org.au

www.grics.com.au

03-51280138